

# I-DRAIN® ABS

> With pre-applied waterproofing membrane of 330 mm

## ABS is a light but tough, impact resistant polymer.

Since I-DRAIN® ABS has a one-piece molded body and removable siphon, it is extremely easy to clean. I-DRAIN® ABS is a very solid and cost-effective solution for new buildings and renovations. The waterproofing membrane has been pre-glued to guarantee a watertight adhesion.

### Pre-applied waterproofing membrane

**DDS** (Double Drain System)

**Built-in height** — 54 mm

**DN 40** — water seal 30

**Capacity** — 26.4 l/min. (1 siphon)

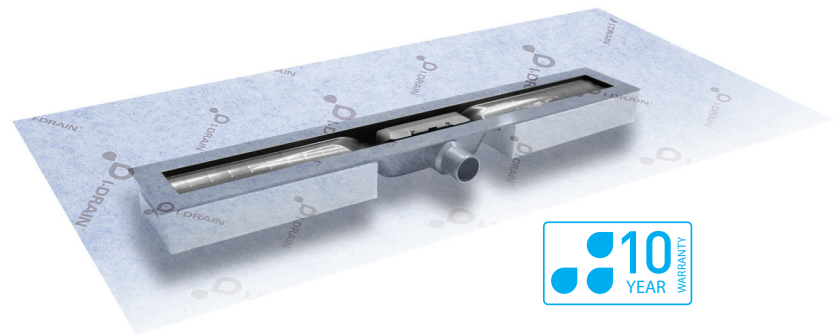
**Use with any tile finish** — 3 mm to 30 mm

**Tested** — 25 years of durability!

Compatible with **liquid waterproofing**

**Removable and dismantable siphon**

**Included:** I-Buddy installation mould and tile mould



### Certified:

SP tested: 25 years watertight adhesion of the membrane with the drain  
ISO 9001

### > Specifications

<b>Waterseal height</b>	30 mm
<b>Output</b>	40 mm
<b>Capacity</b>	0,45 l/s (without strainer)
<b>Drain</b>	ABS
<b>Grating</b>	Stainless steel 304 brushed
<b>Inner screw part</b>	Nylon
<b>Outside screw part</b>	ABS PC
<b>Siphon complete</b>	ABS
<b>Grating supports</b>	ABS
<b>Sealant ring</b>	Silicon

### Available in 6 dimensions:

- 600 mm
- 700 mm
- 800 mm
- 900 mm
- 1000 mm
- 1200 mm

### Included in I-DRAIN® box

- 1x integrated waterproofing membrane
- 1x siphon with strainer
- 1x drain ABS
- 1x grating stainless steel brushed
- 2x water buffers
- 16x grating riser blocks 5 mm
- 8x grating riser blocks 2,5 mm
- 1x PE installation block
- 1x grating suction cup
- 2x corners ABS

